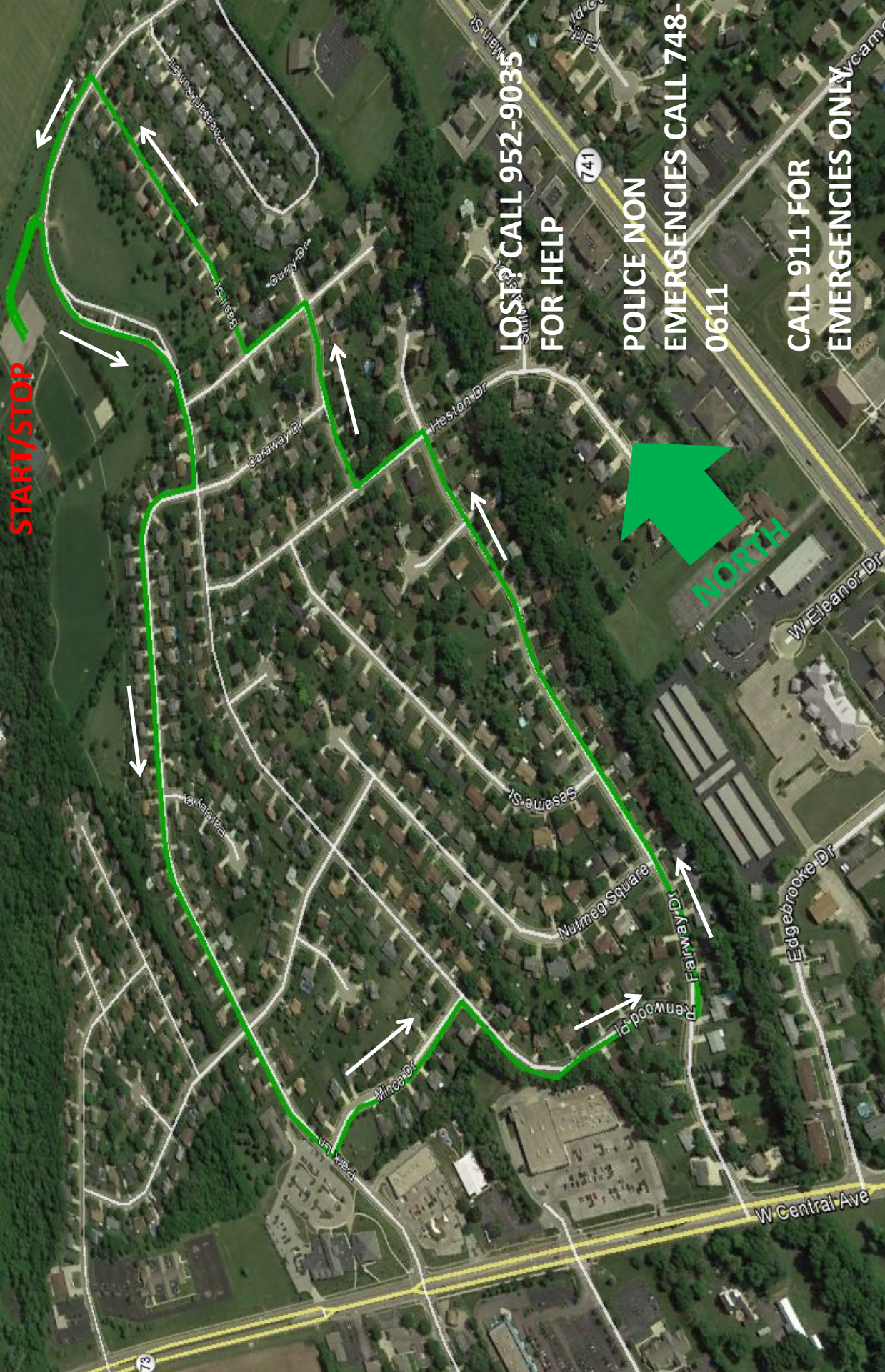


BIKE THE BORO 2.25-MILE GREEN ROUTE

START/STOP



**LOST? CALL 952-9035
FOR HELP**

**POLICE NON
EMERGENCIES CALL 748-
0611**

**CALL 911 FOR
EMERGENCIES ONLY**



NORTH

Green Route/2.25-Mile Route

Revised August 2018

Instruction	Distance (in miles)	Cumulative Distance (in miles)
Start at North Park parking lot and continue to park access drive	<0.10	<0.10
Turn right from entrance drive at Tamarack Trail	0.25	0.35
Turn right at Park Lane	0.50	0.85
Bayberry/Park intersection is a four-way stop—CROSS CAREFULLY		
Turn left at Mince Drive	0.15	1.00
Turn right at Renwood Place	0.20	1.20
Turn left at Fairway Drive	0.30	1.50
Turn left at Heston Drive	0.10	1.60
Turn right at Curry Drive	0.10	1.70
Turn left at Allspice Court	<0.1	1.75
Turn right at Basil Street	0.25	2.00
Turn left at Tamarack Trail	0.15	2.15
Turn right onto North Park access drive to parking lot	<0.10	2.25

Total Length: 2.25 miles

Total Climb: 138 feet

Average Climb: 2.2%

Maximum Climb: 5.5% on Allspice Court segment

Maximum Descent: 5.8% on Park Lane segment

High Point: Park Access Drive at Tamarack Trail: 890 feet

Low Point: Renwood Place at Fairway Drive: 800 feet